



Let **UK** Home

1 Bedrooms

Flat

Located in London

£3,293 Per Month



info@letukhome.co.uk

<https://www.letukhome.co.uk/>

01795 358 886



4B Merchant Square London

W2 1AN



Let UK Home are delighted to offer this luxuriously spacious (538sq ft) interior designed, elegant 1 double bedroom apartment, set within the heart of the Paddington Basin.

The apartment is situated on the fourth floor of this prestigious building which features concierge service, lift service and secure underground parking.

The spacious and bright apartment comprises a beautiful reception room with a new and modern open plan kitchen, double bedrooms, and bathroom.

Residential Land also offer exclusive deals and discounts in local restaurants and gyms specifically to 4B Merchant square tenants. Ask the building manager for more information.

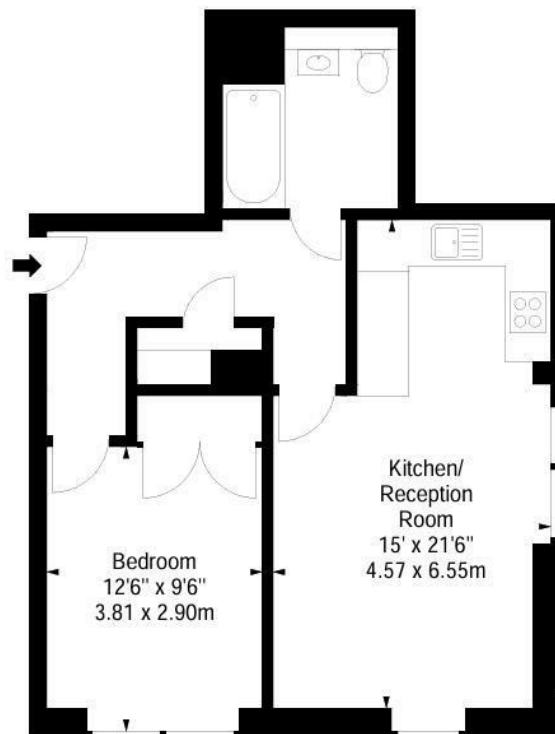
The apartment offers easy access to superb transport links such as Paddington Train Station (Elizabeth Line, Bakerloo, Hammersmith & City, Circle, District lines and Heathrow express) Edgware Road (Circle, District and Bakerloo lines).

4B Merchant Square London

£3,293 Per Month

- 4th Floor
- CCTV
- Lift
- Parking
- Concierge service
- 24 Hour Emergency Helpline & Service
- Available furnished or unfurnished
- Video Entry





Let **UK** Home

3F 2 Eastbourne Terrace
Paddington
London
W2 6LG

01795 358 886

info@letukhome.co.uk

Council Tax Band: E

Local Authority:

Agents Note: Whilst every care has been taken to prepare these particulars, they are for guidance purposes only. All measurements are approximate and are for general guidance purposes only and whilst every care has been taken to ensure their accuracy, they should not be relied upon and potential buyers/tenants are advised to recheck the measurements.

Energy Efficiency Rating		
	Current	Potential
Very energy efficient - lower running costs		
(92 plus) A		
(81-91) B		
(69-80) C		
(55-68) D		
(39-54) E		
(21-38) F		
(1-20) G		
Not energy efficient - higher running costs		
England & Wales		
EU Directive 2002/91/EC		

<https://www.letukhome.co.uk/>